

HOIST RINGS

Hoist Rings Make Lifting Easy

Hoist rings provide the safest method of attaching pickup points to loads. Eye bolts, when lifted at an angle, tend to deform and fracture. Hoist rings are designed to eliminate this weakness.

Features, Advantages and Benefits

Promotes Safety

- Magnetic particle or X-ray inspection of components - assures highest quality
- Predetermines proper hook-up - discourages unauthorized rigging methods
- Designed for lifting at angles - safer than rigid eye bolts
- Fixed lift points prevent load and sling from slipping
- Every hoist ring stamped with rated capacity

Saves Money

- Hooks and slings are not in contact with load - reduces load and sling damage
- Alloy steel material - increases strength, reduces wear
- Black oxide finish - resists corrosion
- Highest industry quality for durability and longest life

Saves Time

- Easy hook-up and disconnect of load
- Full swivel and pivot action of Side-Pull Hoist Rings allows turning and flipping without unhooking
- Easy to Inspect

How To Order

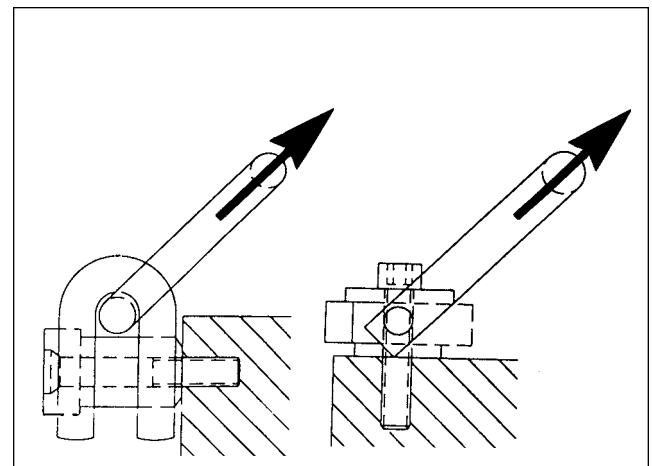
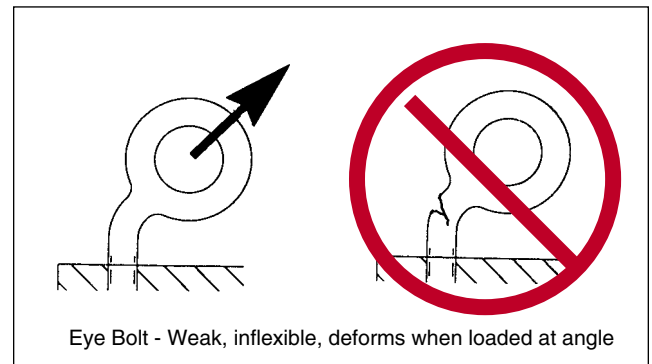
Specify stock number.

Safe Operating Practices

Read and understand instruction sheet supplied with each hoist ring prior to use.

- Do not use a damaged or defective hoist ring - inspect before each use
- Do not overload
- Full thread length must be engaged and torqued according to tables-periodic retorquing may be required.

Hoist ring ratings apply to use at any angle. Be sure that sling tension does not exceed the rating of the hoist ring. Refer to "Effect of Angle of Lift", page 10, to determine sling tension.



Side - Pull Hoist Ring

Strong, flexible, allows full 360° swiveling and pivoting.

Center - Pull Hoist Ring

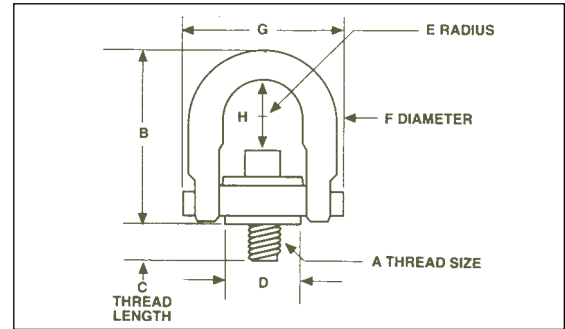
Designed for top of load mounting. The industry standard.

HOIST RINGS

Center - Pull Hoist Rings

The industry standard hoist ring. Designed specifically for top of load mounting. Popular size hoist rings (1/2 - 13 through 1 - 8) are offered with two or more bolt lengths. Use longer length with softer parent materials, the shorter with hard materials such as steel.

Proof tested to 200% of Rated Load Capacity.



Center-Pull Hoist Rings (Dimensions in inches)

Bolt Kits ***

Thread Size A	Rated Capacity* (lbs.)	STD. Clevis		Long Clevis		Thread Length C	D	Radius E	Dia. F	G	H	Torque** (ft. lbs.)	Weight (lbs.)	Part No.	Weight (lbs.)
		Part No.	B	Part No.	B										
5/16-18	800	09439	2 21/32			9/16	3/4	7/16	3/8	1 27/32	1 1/4	7	.3	09448	.03
3/8-16	1,000	09387	2 21/32			9/16	3/4	7/16	3/8	1 27/32	1 1/4	12	.3	09449	.05
1/2-13	2,500	09440	3 3/4			1 1/16	1 3/16	11/16	1/2	2 9/16	2 3/8	28	1.0	09450	.16
1/2-13	2,500	09441	4 25/32	09506	6 23/32	3/4	1 1/2	7/8	3/4	3 1/2	2 3/8	28	2.5	09451	.14
1/2-13	2,500	09388	4 25/32	09507	6 23/32	1	1 1/2	7/8	3/4	3 1/2	2 3/8	28	2.5	09452	.16
1/2-13	2,500	09442	4 25/32	09508	6 23/32	1 1/4	1 1/2	7/8	3/4	3 1/2	2 3/8	28	2.5	09453	.17
5/8-11	4,000	09443	4 25/32	09509	6 23/32	1	1 1/2	7/8	3/4	3 1/2	2 1/4	60	2.7	09454	.27
5/8-11	4,000	09389	4 25/32	09510	6 23/32	1 1/4	1 1/2	7/8	3/4	3 1/2	2 1/4	60	2.7	09455	.29
3/4-10	5,000	09390	4 25/32	09511	6 23/32	1	1 1/2	7/8	3/4	3 1/2	2 1/8	100	3.0	09456	.40
3/4-10	5,000	09391	4 25/32	09512	6 23/32	1 1/2	1 1/2	7/8	3/4	3 1/2	2 1/8	100	3.0	09457	.46
3/4-10	7,000	09392	6 1/2	09513	8 23/32	1	2 5/16	1 13/32	1	5 1/8	2 15/16	100	7.0	09458	.46
3/4-10	7,000	09444	6 1/2	09514	8 23/32	1 1/2	2 5/16	1 13/32	1	5 1/8	2 15/16	100	7.0	09459	.52
7/8-9	8,000	09445	6 1/2	09515	8 23/32	1	2 5/16	1 13/32	1	5 1/8	2 13/16	160	7.0	09460	.62
7/8-9	8,000	09393	6 1/2	09516	8 23/32	1 1/4	2 5/16	1 13/32	1	5 1/8	2 13/16	160	7.0	09461	.66
1-8	10,000	09394	6 1/2	09517	8 23/32	1 1/4	2 5/16	1 13/32	1	5 1/8	2 11/16	230	7.5	09462	.92
1-8	10,000	09395	6 1/2	09518	8 23/32	1 1/2	2 5/16	1 13/32	1	5 1/8	2 11/16	230	7.5	09463	.97
1-8	10,000	09446	6 1/2	09519	8 23/32	2 1/4	2 5/16	1 13/32	1	5 1/8	2 11/16	230	7.5	09464	1.1
1 1/4-7	15,000	09396	8 23/32			1 7/8	3 3/16	1 3/4	1 1/4	6 1/2	4 3/16	470	14	09465	2.9
1 1/2-6	24,000	09397	12 15/32			2 3/4	4 3/16	2 1/4	1 3/4	8 1/2	6 5/16	800	33	09466	3.5
2-4 1/2	30,000	09447	12 15/32			3 1/8	4 3/16	2 1/4	1 3/4	8 1/2	5 13/16	1100	36	09467	7.3

Metric Center-Pull Hoist Rings (Dimensions in millimeters)

Bolt Kits ***

Thread Size A	Rated Capacity* (kgs.)	STD. Clevis		Long Clevis		Thread Length C	D	Radius E	Dia. F	G	H Std. Clevis	Torque** (kg.m.)	Weight (kgs.)	Part No.	Weight (kgs.)
		Part No.	B	Part No.	B										
M8 x 1.25	400	09482	67.8			12.5	19.0	10.9	9.7	46.7	32	1.0	.17	09489	.02
M10 x 1.50	450	09483	67.8			17.5	19.0	10.9	9.7	46.7	30	1.7	.17	09490	.03
M12 x 1.75	1,050	09403	121.4	09520	170.7	19.0	38.1	22.4	19.0	89.4	60.5	3.8	1.08	09491	.06
M16 x 2.0	1,900	09404	121.4	09521	170.7	29.0	38.1	22.4	19.0	89.4	56.5	8.2	1.12	09492	.12
M20 x 2.5	2,150	09484	121.4	09522	170.7	34.0	38.1	22.4	19.0	89.4	52.5	13.6	1.19	09493	.21
M20 x 2.5	3,000	09405	165.6	09523	206.0	32.0	58.7	35.6	25.4	130.6	73	13.6	3.03	09494	.23
M24 x 3.0	4,200	09406	165.6	09524	206.0	37.0	58.7	35.6	25.4	130.6	69	31.0	3.10	09495	.40
M30 x 3.5	7,000	09407	221.7			41.9	81.0	44.5	31.7	165.1	107.4	60.0	6.3	09496	.79
M30 x 3.5	7,000	09485	221.7			61.7	81.0	44.5	31.7	165.1	107.4	60.0	6.4	09497	.91
M36 x 4.0	11,000	09486	316.7			63.5	106.4	57.2	44.4	217.2	166.5	100.0	15.5	09498	1.52
M42 x 4.5	12,500	09487	316.7			68.0	106.4	57.2	44.4	217.2	160.5	100.0	16.0	09499	2.75
M48 x 5.0	13,500	09488	316.7			82.4	106.4	57.2	44.4	217.2	154.5	100.0	16.8	09500	3.27
M64 x 6.0	22,500	09655	419.1			101.6	146.0	76.2	57.2	297.6	210	290.0	40.0	09656	15.70

⚠ WARNING

Do not exceed rated capacities. Be sure that sling tension does not exceed hoist ring capacity. Follow instructions on page 10.

** Stated load capacity based on specific thread torques as shown in chart.

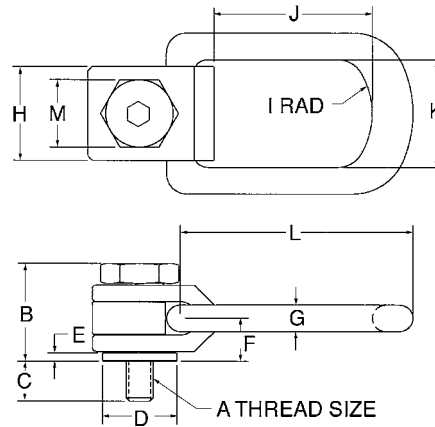
*** Bolt kit contains bolt and retaining ring.

HOIST RINGS

Side - Pull Hoist Rings

This most versatile style of hoist ring is particularly suited for turning and flipping loads, but works equally well for top lifts. Used extensively in automotive stamping plants and injection molding operations for die changing.

- Full swivel & Pivot Action
- Alloy Steel, Black Oxide Finish
- Proof Tested to 200% of Rated Load Capacity



U.S. Patent #409,895

Side-Pull Hoist Rings (Dimensions in inches)

Part No.	Load Capacity (lbs.)	Thread Size A	B	C	D	E	F	G	H	I	J	K	L	M	Torque** (ft.lbs.)	Hex Size	Weight (lbs.)
10253	650	5/16 - 18	1 9/32	15/32	13/16	1/8	9/16	5/16	1	1	1 1/4	1 3/4	3	3/4	4	-	.5
10254	800	3/8 - 16	1 9/32	5/8	13/16	1/8	9/16	5/16	1	1	1 1/4	1 3/4	3	3/4	5	-	.5
10255	1,800	1/2 - 13	1 7/8	3/4	1 3/8	5/32	13/16	1/2	1 3/4	1 1/2	2 3/8	2	4 5/16	1 1/4	15	1/4	2
10256	2,500	5/8 - 11	1 7/8	15/16	1 3/8	5/32	13/16	1/2	1 3/4	1 1/2	2 3/8	2	4 5/16	1 1/4	25	5/16	2
10257	4,100	3/4 - 10	2 5/16	1 1/8	1 7/8	1/4	1 1/32	5/8	2 1/4	2	2 1/4	2 5/8	5 11/16	1 3/4	50	3/8	4
10258	7,100	1 - 8	2 5/16	1 1/2	1 7/8	1/4	1 1/32	5/8	2 1/4	2	2 1/4	2 5/8	5 11/16	1 3/4	130	1/2	4.5
10259	14,000	1 1/4 - 7	4 9/16	1 7/8	3 1/4	23/64	1 21/32	1 1/16	3 3/4	3	2 1/8	4 3/8	8 13/16	3	150	3/4	24.5
10260	17,200	1 1/2 - 6	4 9/16	2 1/4	3 1/4	23/64	1 21/32	1 1/16	3 3/4	3	2 1/8	4 3/8	8 13/16	3	250	3/4	30
10261	29,000	2 - 4 1/2	4 9/16	3	3 1/4	23/64	1 21/32	1 1/16	3 3/4	3	2 15/16	4 3/8	8 13/16	3	300	3/4	26.5

Metric Side-Pull Hoist Rings (Dimensions in millimeters)

Bushing is zinc plated silver.

Part No.	Load Capacity (kgs.)	Thread Size A	B	C	D	E	F	G	H	I	J	K	L	M	Torque** (kg.m.)	Hex Size	Weight (kgs.)
10262	325	M8 x1.25	33	16	21	3	14	8	25	25	52	44	76	19	.51	-	.25
10263	500	M10 x 1.5	33	20	21	3	14	8	25	25	52	44	76	19	1.1	-	.25
10264	725	M12 x 1.75	48	24	35	4	21	13	44	38	75	51	110	32	1.9	6	1
10265	1,400	M16 x 2.0	48	32	35	4	21	13	44	38	75	51	110	32	4.1	8	1
10266	2,290	M20 x 2.5	59	40	48	6	26	16	57	51	102	67	145	44	6.9	10	2
10267	3,050	M24 x 3	59	48	48	6	26	16	57	51	102	67	145	44	14	12	2
10268	4,850	M30 x 3.5	117	60	83	9	42	27	95	76	154	111	224	76	35	19	24.5
10269	7,500	M36 x 4	117	72	83	9	42	27	95	76	154	111	224	76	55	19	25
10270	8,700	M42 x 4.5	117	84	83	9	40	25	95	76	152	111	221	76	83	19	27.5
10271	10,000	M48 x 5	117	96	83	9	40	27	95	76	154	111	224	76	118	19	26

* **WARNING** Do not exceed rated capacities. Be sure that sling tension does not exceed hoist ring capacity. Follow Instructions on page 10.

** It is recommended that these torques be used when installing hoist rings.