

RESIN FIBER DISCS - A/O

| Characteristics/Applications | Materials | Tool Selector |
|--|--|---------------|
| <ul style="list-style-type: none"> Grinding and stock removal Blending welds, surface leveling Most aggressive coated abrasive for sanding large areas Removes rust and surface imperfections Fiber backing adds rigidity | <ul style="list-style-type: none"> Ferrous Non-Ferrous Stainless Exotics Metal Matrix Composites | |

RESIN FIBER DISCS - ZIRC

| Characteristics/Applications | Materials | Tool Selector |
|---|---|---------------|
| <ul style="list-style-type: none"> Heavy grinding, stock removal, weld blending, surface leveling Most aggressive coated abrasive for sanding large areas Ideal for stainless Fiber backing adds rigidity and grain support | <ul style="list-style-type: none"> Ferrous Stainless Exotics Metal Matrix Composites | |

| SIZE | GRIT | MAX RPM | STD. PKG. | 7/8" HOLE PART # | 5/8-11 QUICK-CHANGE PART# |
|--------|------|---------|-----------|------------------|---------------------------|
| 4 1/2" | 24 | 13,300 | 25 | 11718 | 11768 |
| | 36 | | | 11719 | 11769 |
| | 50 | | | 11720 | 11770 |
| | 60 | | | 11721 | 11771 |
| | 80 | | | 11722 | 11772 |
| | 120 | | | 11724 | 11774 |
| 5" | 16 | 12,200 | 25 | 11725 | 11775 |
| | 24 | | | 11726 | 11776 |
| | 36 | | | 11727 | 11777 |
| | 50 | | | 11728 | 11778 |
| | 60 | | | 11729 | 11779 |
| | 80 | | | 11730 | 11780 |
| 7" | 16 | 8,600 | 25 | 11733 | 11783 |
| | 24 | | | 11734 | 11784 |
| | 36 | | | 11735 | 11785 |
| | 50 | | | 11736 | 11786 |
| | 60 | | | 11737 | 11787 |
| | 80 | | | 11738 | 11788 |
| | 120 | | | 11740 | 11790 |

| SIZE | GRIT | MAX RPM | STD. PKG. | 7/8" HOLE PART # | 5/8-11 QUICK-CHANGE PART# |
|--------|------|---------|-----------|------------------|---------------------------|
| 4 1/2" | 24 | 13,300 | 25 | 11748 | 11798 |
| | 36 | | | 11749 | 11799 |
| | 50 | | | 11750 | 11800 |
| | 60 | | | 11751 | 11801 |
| | 80 | | | 11752 | 11802 |
| 5" | 24 | 12,200 | 25 | 11753 | 11803 |
| | 36 | | | 11754 | 11804 |
| | 50 | | | 11755 | 11805 |
| | 60 | | | 11756 | 11806 |
| | 80 | | | 11757 | 11807 |
| 7" | 24 | 8,600 | 25 | 11758 | 11808 |
| | 36 | | | 11759 | 11809 |
| | 50 | | | 11760 | 11810 |
| | 60 | | | 11761 | 11811 |
| | 80 | | | 11762 | 11812 |

Disc Cutter - Page 52.

Superior support



Superior Abrasives fiber discs have tremendous edge wear.

CROSS REFERENCE

| Superior | Norton | 3M | VSM | Gemtex | Sait | Hermes | Carbo |
|------------|--------------|----------------------|----------------|------------------|------|--------|----------------|
| A/O | F226 | 281C 381C | KF708 | A-TYPE C-TYPE | 2A | RB314X | V0945 V0947 |
| Zirc | F826 | 501C | ZF713 | ZEE TYPE | Z | RB414X | Z1145 V1247 |
| Ceramic GA | F944 F968 | 988C 983C 785C | SF750 SF840 | PMD | — | CB444X | V2547 |

Red Part Numbers Are Stock Items

www.superiorabrasives.com

Free!
SAMPLES

Call for Details

Phone: 800-235-9123 / Fax: 800-841-3441

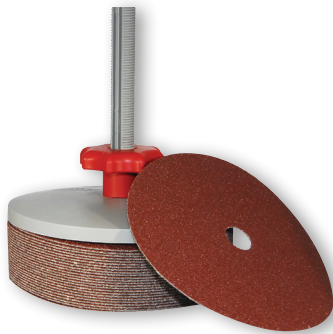
Quote Fax: 877-420-1952

RESIN FIBER DISCS - CERAMIC G.A.



| Characteristics/Applications | Materials | Tool Selector |
|---|---|---------------|
| <ul style="list-style-type: none"> • Designed for heavy grinding, stock removal, when heat is an issue • Heavy weld blending and surface leveling • Aggressive sanding • Ideal for grinding titanium and exotic metals • Fiber backing adds rigidity and grain support | <ul style="list-style-type: none"> ● Ferrous ● Non-Ferrous ● Stainless ● Exotics ● Metal Matrix Composites | |

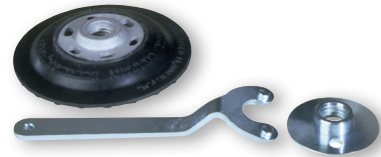
| SIZE | GRIT | MAX RPM | STD. PKG. | 7/8" HOLE | | 5/8-11 |
|--------|------|---------|-----------|-----------|--------------------|--------|
| | | | | PART # | QUICK-CHANGE PART# | |
| 4 1/2" | 24 | 13,300 | 25 | 43582 | | 43900 |
| | 36 | | | 43583 | | 43901 |
| | 50 | | | 43830 | | 43902 |
| | 60 | | | 43553 | | 43903 |
| | 80 | | | 43831 | | 43904 |
| 5" | 24 | 12,200 | 25 | 42965 | | 43905 |
| | 36 | | | 42966 | | 43906 |
| | 50 | | | 42967 | | 43907 |
| | 60 | | | 42655 | | 43908 |
| | 80 | | | 41929 | | 43909 |
| 7" | 24 | 8,600 | 25 | 40703 | | 43910 |
| | 36 | | | 40704 | | 43911 |
| | 50 | | | 42390 | | 43912 |
| | 60 | | | 40705 | | 43913 |
| | 80 | | | 42969 | | 43914 |



FIBER DISC HOLDER

| DESCRIPTION | PART # |
|-------------------|--------|
| Fiber Disc Holder | 45176 |

Supplied for 5/8 - 11 Threaded Arbor



AIR COOLED BACK UP PADS

| STYLE | DESCRIPTION | PART # |
|-------|---------------|--------|
| R425 | 4 1/2" Medium | 11847 |
| R500 | 5" Medium | 11850 |
| F700 | 7" Flexible | 11852 |
| R700 | 7" Medium | 11853 |
| H700 | 7" Rigid | 11854 |
| R900 | 9" Medium | 11856 |
| D11 | Pad Nut | 11858 |
| PW10 | Pad Wrench | 11859 |

Nut and wrench not supplied with pad.

Superior support

FIBER DISCS

Premium A/O

Heat treated A/O grain is a good starting point for general purpose applications such as stock removal, weld blending, and leveling.

Zirc

Blended Zirconia and heat treated A/O, doubles the cutting action. Ideal for aggressive high pressure applications.

Ceramic

SG Grain self-sharpenes during use. Breaking down with less pressure generating less heat. The grinding aid keeps the disc cool.

Value

Heat Dissipation

Life

Red Part Numbers Are Stock Items
www.superiorabrasives.com

Free!
SAMPLES

Call for Details

Phone: 800-235-9123 / Fax: 800-841-3441
Quote Fax: 877-420-1952