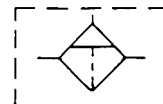




East: 732-390-8480 (NJ)  
West: 503-434-5964 (OR)  
E-mail: info@coilhose.com

INS-29F (revised 10/2012)



## 29 Series - Modular Filter

### Application:

The 29 Series Modular Filter is designed for almost any application. These filters feature a wide variety of body sizes and port sizes making this series highly versatile. This series also includes options and accessories suitable for demanding OEM to rugged industrial applications.

### Specifications:

Proof Pressure	220 PSI
Max Operating Pressure	145 PSI
Max Operating Temperature	
Plastic Bowl	140°F
Metal Bowl	150°F
Ambient and Fluid Temp	32°F to 140°F
Material	
Body	Aluminum
Filter Element <sup>1</sup>	Polypropylene
Bowl Materials	
Plastic	Polycarbonate
Metal	Aluminum
Bowl Guard <sup>2</sup>	Steel

### Parts and Accessories:

#### Replacement Plastic Bowls

2F-Miniature	29-2F40
3F-Compact	29-3F40
4F-Standard	29-4F40
5F-High Flow	29-4F40

#### Replacement Plastic Bowls w/ Auto Drain

2F-Miniature	29-2F40D
3F-Compact	29-3F40D
4F-Standard	29-4F40D
5F-High Flow	29-4F40D

#### Replacement Metal Bowls w/ Auto Drain

2F-Miniature	29-2F40DM
3F-Compact	29-3F40DM
4F-Standard	29-4F40DM
5F-High Flow	29-4F40DM

#### Repair Kits

2F-Miniature	29-2FRK
3F-Compact	29-3FRK
4F-Standard	29-4FRK
5F-High Flow	29-5FRK

<sup>1</sup> Standard: 40µm - Optional: 5µm, 20µm

<sup>2</sup> Bowl Guard unavailable of 2F-Miniature



29-2F14-0



29-3F38-0

### Part Numbering System

29 - 3 F 38 - 0 D

**Body Size**  
2 - Miniature  
3 - Compact  
4 - Standard  
5 - High Flow

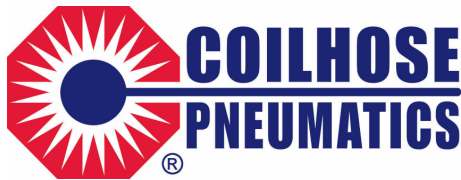
**Filter Options**  
0 - 40 µm  
F - 20 µm  
X - 5 µm

**Port Size**  
18 - 1/8" NPT  
14 - 1/4" NPT  
38 - 3/8" NPT  
12 - 1/2" NPT  
34 - 3/4" NPT  
10 - 1" NPT

**Bowl Options**  
D - Auto Drain  
M - Metal Bowl

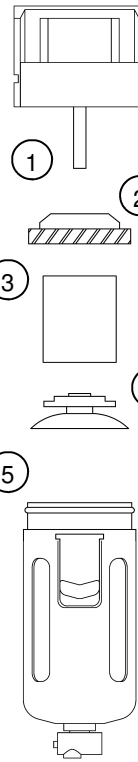
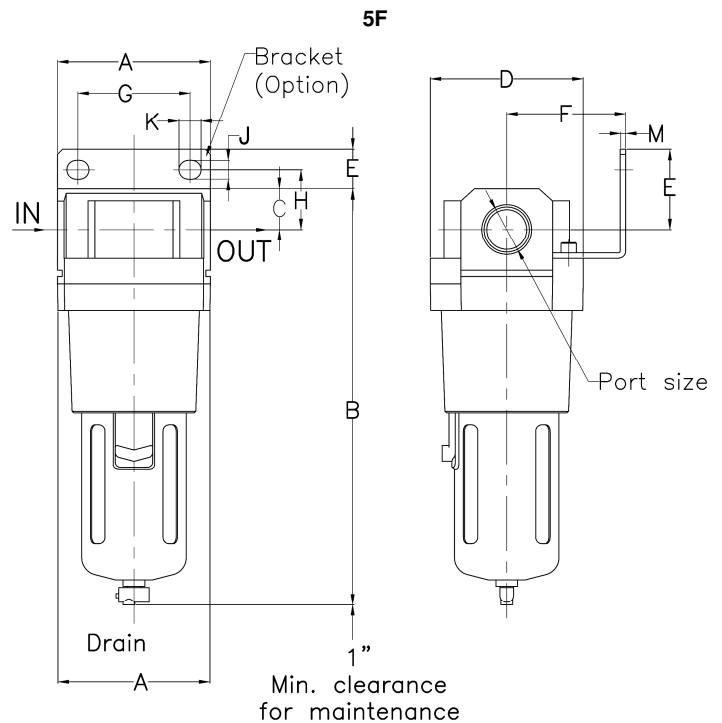
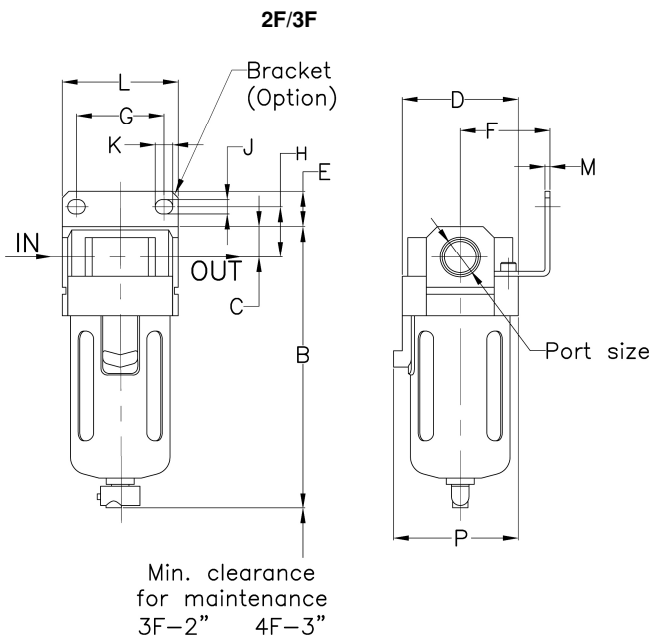
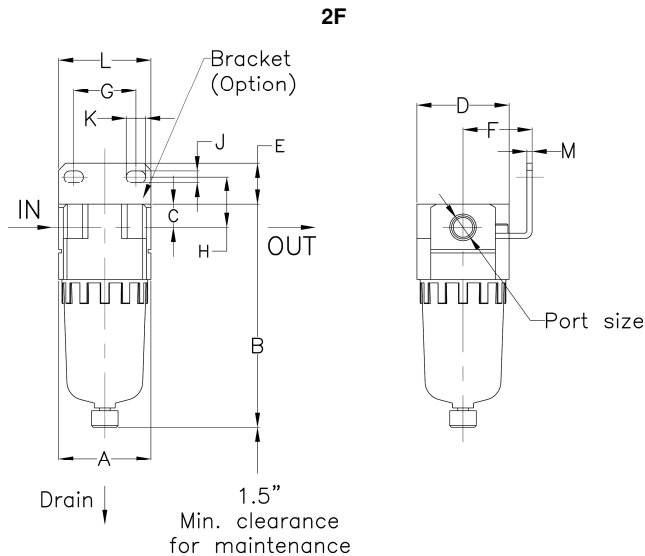
Body Size	Ports (NPT)	Bowl Capacity	Weight	Max Flow
2F-Miniature	1/8", 1/4"	1.1 oz	.25 lbs	26.5 CFM
3F-Compact	1/4", 3/8"	5 oz	.60 lbs	53 CFM
4F-Standard	3/8", 1/2"	16 oz	1.10 lbs	140 CFM
5F-High Flow	3/4", 1"	16 oz	2.20 lbs	247 CFM

Test Conditions: Supply Pressure = 100 PSI, Set Pressure = 70 PSI



East: 732-390-8480 (NJ)  
West: 503-434-5964 (OR)  
E-mail: info@coilhose.com

## 29 Series - Modular Filter



### Filter Assembly:

- 1 - Filter Head with Stem
- 2 - Deflector Vane Plate
- 3 - Filter Element
- 4 - Retainer Baffle
- 5 - Filter Bowl

### Cleaning and Maintenance:

Removal of the filter from the line for cleaning is not necessary. Disassembly requires no tools and the filter and the filter element should be removed from the unit as follows. Air supply must be shut off and the filter must be depressurized prior to disassembly. Depress the safety tab on the clamping ring and, by rotating it slightly and pulling downward, the clamp is removed from the head of the unit. The bowl can then be separated from the unit with slight downward force. Unscrew the retainer baffle from the stem and remove the filter element. Clean parts with a mild detergent. Replace filter element and reassemble unit.

Body Size	Standard Dimensions					Bracket Mounting Dimensions								With Auto Drain
	A	B	C	D	P	E	F	G	H	J	K	L	M	B
2F	1.57	3.82	.39	1.57	-	.71	1.18	1.03	.86	.21	.295	1.59	.08	4.53
3F	2.08	5.07	.55	2.08	2.24	.63	1.61	1.38	.90	.26	.315	1.90	.10	6.69
4F	2.75	6.49	.70	2.75	2.87	.67	1.96	1.88	1.02	.34	.415	2.48	.10	8.03
5F	3.54	9.64	.94	3.54	-	.90	2.75	2.15	1.37	.34	.415	3.15	.12	11.18