



OSHA 29 CFR 1910.140, 1926.502
ANSI Z359.18-2017 (Type A)

**3M™ DBI-SALA®
CAB TOP MOUNTING BRACKET**



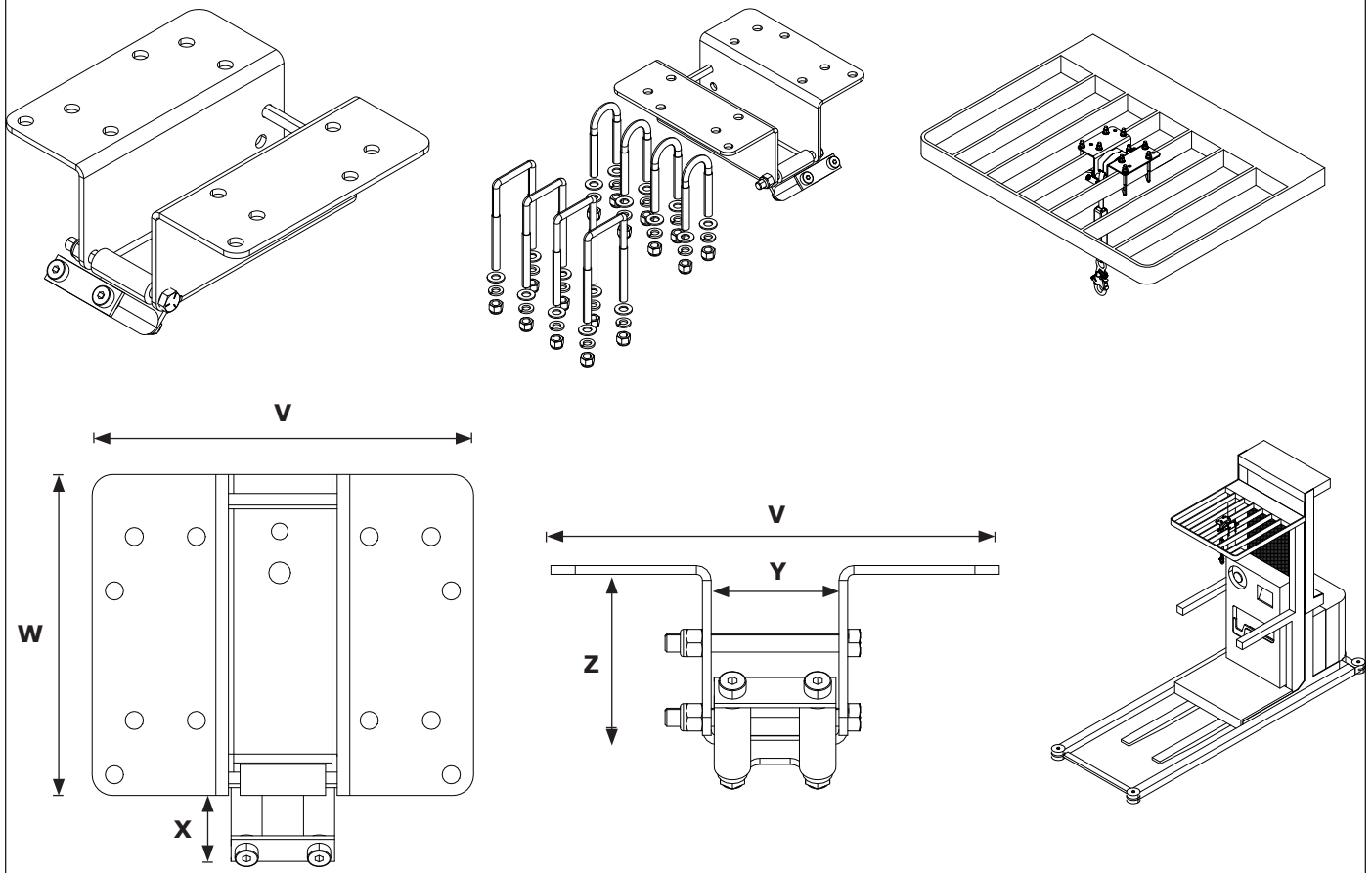
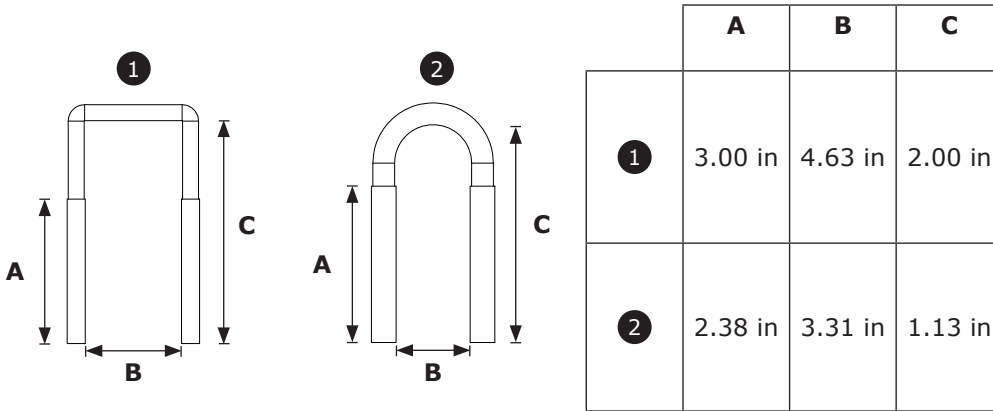
**USER INSTRUCTIONS
5903470 REV. D**

Fall Protection

☑ For identification of product codes, refer to Table 1. See "Table 1 - Product Specifications" for more product information.

Figure 1 - Product Overview

Model	Style	V	W	X	Y	Z	lb. (kg)
3100271	A	9.2 in. (23.4 cm)	7.75 in. (19.7 cm)	1.71 in. (4.3 cm)	2.63 in. (6.7 cm)	3.5 in. (8.9 cm)	11.4 lb. (5.2 kg)



SAFETY INFORMATION

Please read, understand, and follow all safety information contained in these instructions, prior to the use of this product. **FAILURE TO DO SO COULD RESULT IN SERIOUS INJURY OR DEATH.**

These instructions must be provided to the user of the equipment. Retain these instructions for future reference.

Intended Use:

This product is used as part of a complete Fall Protection system.

Use in any other application including, but not limited to, material handling, recreational or sports-related activities, or other activities not described in these instructions, is not approved by 3M and could result in serious injury or death.

This product is only to be used by trained users in workplace applications.



WARNING

This product is used as part of a complete Fall Protection system. All users must be fully trained in the safe installation and operation of their complete Fall Protection system. **Misuse of this product could result in serious injury or death.** For proper selection, operation, installation, maintenance, and service, refer to all instruction manuals and manufacturer recommendations. For more information, see your supervisor or contact 3M Technical Services.

- **To reduce the risks associated with using an Anchorage Connector which, if not avoided, could result in serious injury or death:**
 - Inspect the product before each use and after any fall event, in accordance with the procedures specified in these instructions.
 - If inspection reveals an unsafe or defective condition, remove the product from service immediately and clearly tag it "DO NOT USE". Destroy or repair the product as required by these instructions.
 - Any product that has been subject to fall arrest or impact force must be immediately removed from service. Destroy or repair the product as required by these instructions.
 - Ensure that Fall Protection systems assembled from components made by different manufacturers are compatible and meet all applicable Fall Protection regulations, standards, or requirements. Always consult a Competent or Qualified Person before using these systems.
 - The product must only be installed as described in its instruction manuals. Installations and use outside the scope of these instruction manuals must be approved in writing by 3M.
 - The structure the anchorage connector is supported by or attached to must be able to sustain the static loads specified for the product in the orientations permitted in these instructions.
 - Only connect Fall Protection subsystems to the designated anchorage connection points on the product.
 - Before installing, ensure that the installation methods and the product will not interfere with electric lines, gas lines, or other critical materials or systems.
 - Do not twist, tie, knot, or allow slack in the lifeline.
 - Use caution when installing, using, or moving the product as moving parts may create pinch points.
 - Ensure the product is configured and installed properly for safe operation as described in these instructions.
 - Do not exceed the number of allowable users specified in these instructions.
- **To reduce the risks associated with working at height which, if not avoided, could result in serious injury or death:**
 - Your health and physical condition must allow you to safely work at height and to withstand all forces associated with a fall arrest event. Consult your doctor if you have questions regarding your ability to use this equipment.
 - Never exceed allowable capacity of your Fall Protection equipment.
 - Never exceed the maximum free fall distance specified for your Fall Protection equipment.
 - Do not use any Fall Protection equipment that fails inspection, or if you have concerns about the use or suitability of the equipment. Contact 3M Technical Services with any questions.
 - Some subsystem and component combinations may interfere with the operation of this equipment. Only use compatible connections. Contact 3M Technical Services before using this equipment in combination with components or subsystems other than those described in these instructions.
 - Use extra precautions when working around moving machinery, electrical hazards, extreme temperatures, chemical hazards, explosive or toxic gases, sharp edges, abrasive surfaces, or below overhead materials that could fall onto you or your Fall Protection equipment.
 - Ensure use of your product is rated for the hazards present in your work environment.
 - Ensure there is sufficient fall clearance when working at height.
 - Never modify or alter your Fall Protection equipment. Only 3M, or persons authorized in writing by 3M, may make repairs to 3M equipment.
 - Before using Fall Protection equipment, ensure a written rescue plan is in place to provide prompt rescue if a fall incident occurs.
 - If a fall incident occurs, immediately seek medical attention for the fallen worker.
 - Only use a full body harness for Fall Arrest applications. Do not use a body belt.
 - Minimize swing falls by working as directly below the anchorage point as possible.
 - A secondary Fall Protection system must be used when training with this product. Trainees must not be exposed to an unintended fall hazard.
 - Always wear appropriate Personal Protective Equipment when installing, using, or inspecting the product.
 - Never work below a suspended load or worker.
 - Always maintain 100% tie-off.

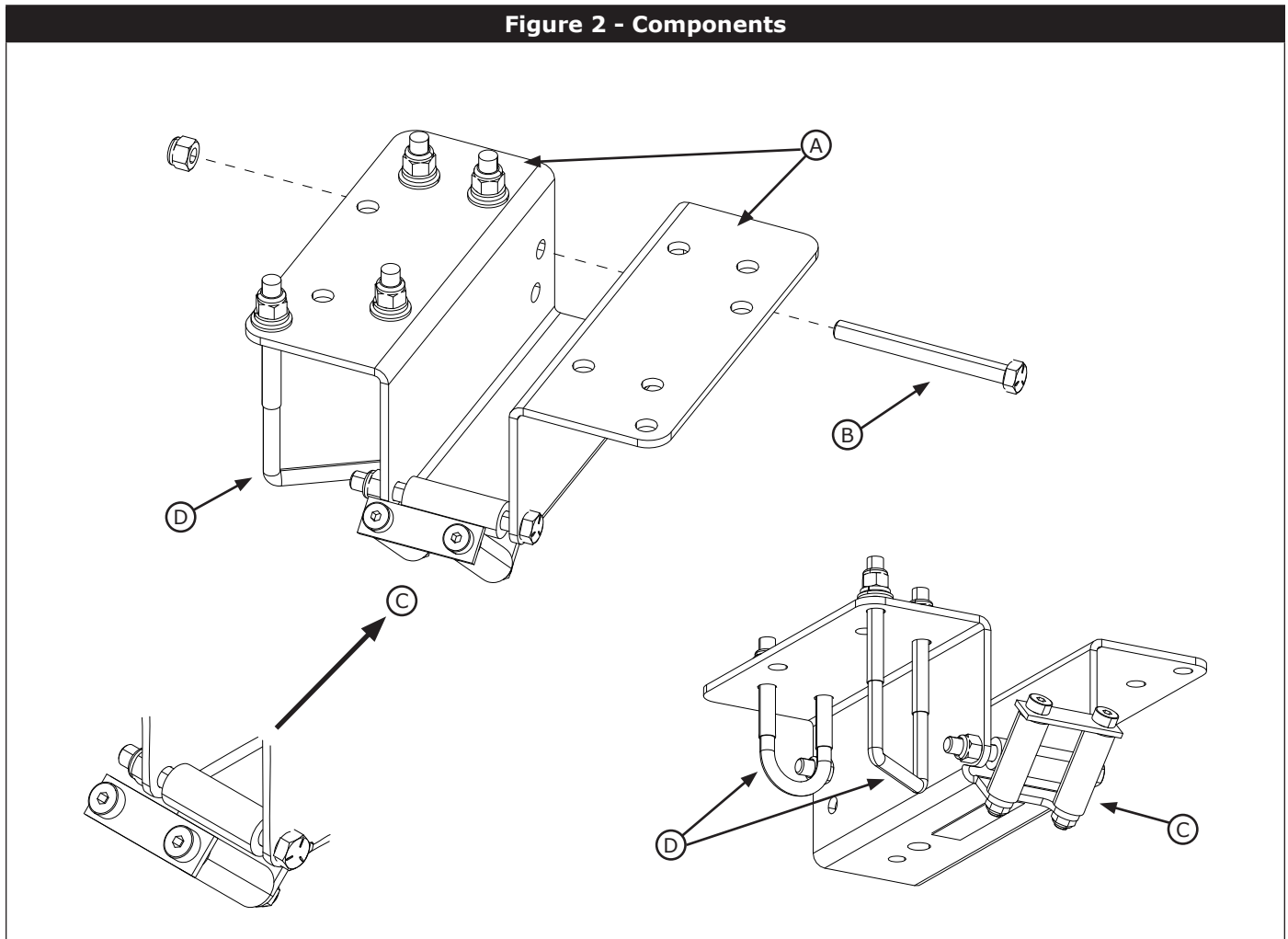
☑ Always ensure you are using the latest revision of your 3M instruction manual. Visit www.3m.com/userinstructions or contact 3M Technical Services for updated instruction manuals.

PRODUCT OVERVIEW:

Figure 1 illustrates the product models covered by this instruction. The Cab Top Mounting Bracket is a single point anchorage connector for a personal fall arrest system designed to be used for mounting Self-Retracting Devices (SRD) on the cab top of an order picker or other similar equipment.

Figure 2 identifies key components of the sliding beam anchor. The Cab Top Mounting Bracket is comprised of a steel bracket which mounts from the top between the cross members of the cab roof. The two flanges of the Mounting Bracket (A) flank either side of where the Bracket is inserted and each serve as anchor points for the Cross Members to hold the Bracket in place. The U-Bolts (D) are affixed between the holes of the Mounting Bracket Flanges, just below the Cross Members, to set the anchor point. The Mounting Bolt (B) is used to secure a compatible SRD by threading through the SRD Swivel Eye. The Roller Assembly (C) surrounds the SRD lifeline to protect it from the bracket edges and provide smooth operation.

Each product model has its own specifications as listed in Figure 1. See Table 1 for more information on Component Specifications.



Before using this equipment, record the product identification information from the ID label in the 'Inspection and Maintenance Log' at the back of this manual.

Table 1 – Product Specifications

System Specifications:	
Capacity:	Maximum capacity 310 lb. (140 kg) per ANSI, 420 lb. (190 kg) per OSHA.
Anchorage:	ANSI compliance and testing only covers the bracket and hardware. It does not extend to the anchorage and substrate to which the anchorage connector is attached.
Maximum Deflection:	The maximum deflection for the anchorage connector and its anchorage connection point as a result of fall arrest is 0 in. (0 mm).
Service Temperature:	Minimum service temperature of -30°F (-34°C)
Standards:	Each product model is certified to, or conforms with, the applicable standards and regulations listed within Figure 1. If none are specified, then all standards and regulations listed on the cover apply. <input checked="" type="checkbox"/> Product certified to ANSI/ASSP standards has been tested in compliance with the requirements of ANSI/ASSP Z359.7.

Component Specifications:		
Figure 2 Reference	Component	Materials
(A)	Mounting Bracket	Steel
(B)	Mounting Bolt	Steel
(C)	Roller Assembly	Rollers: Nylon; Hardware: Steel
(D)	U-Bolt	Steel

Fastener Specifications:		
Description	Materials	Quantity
Rounded U-Bolts	Steel	4
Angled U-Bolts	Steel	4

1.0 PRODUCT APPLICATION

- 1.1 **PURPOSE:** Anchorage Connectors are designed to secure to an anchorage structure and provide anchorage connection points for Fall Protection systems when secured. For more information on system applications, refer to the "Product Overview" and Table 1.
- 1.2 **SUPERVISION:** Use of this equipment must be supervised by a Competent Person.
- 1.3 **STANDARDS:** Your product conforms to the national or regional standards identified on the front cover of these instructions. If this product is resold outside the original country of destination, the re-seller must provide these instructions in the language of the country in which the product will be used.

For more information on certification or conformance requirements, refer to the applicable standards and regulations listed for your product (e.g. the ANSI/ASSP Z359 Fall Protection codes).

Product compliance with applicable standards and regulations covers only the anchorage connector itself and not the structure or substrate to which it is secured.

- 1.4 **TRAINING:** This equipment must be installed and used by persons trained in its correct application. These instructions are to be used as part of an employee training program as required by national, regional, or local standards. It is the responsibility of the users and installers of this equipment to ensure they are familiar with these instructions, trained in the correct care and use of this equipment, and are aware of the operating characteristics, application limitations, and consequences of improper use of this equipment.
- 1.5 **RESCUE PLAN:** When using this equipment and connecting subsystems, the employer must have a written rescue plan and the means to implement and communicate that plan to users, authorized persons, and rescuers. A trained, on-site rescue team is recommended. Team members should be provided with the equipment and techniques necessary to perform a successful rescue. Training should be provided on a periodic basis to ensure rescuer proficiency. Rescuers should be provided with these instructions. There should be visual contact or means of communication with the person being rescued at all times during the rescue process.

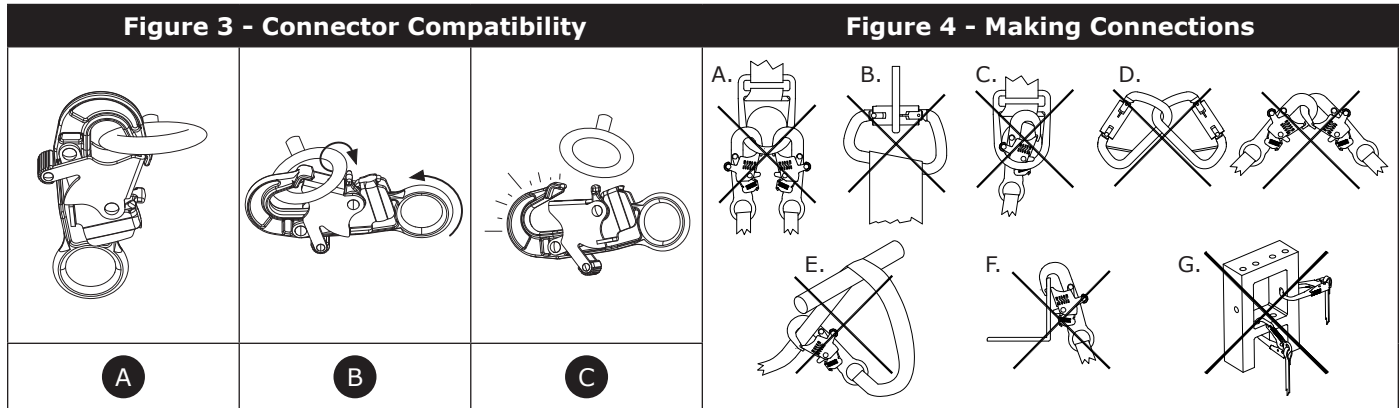
2.0 SYSTEM REQUIREMENTS

- 2.1 **ANCHORAGE:** Anchorage requirements vary with the Fall Protection application. The mounting structure on which the equipment is placed must meet the Anchorage specifications defined in Table 1.
- 2.2 **CAPACITY:** The user capacity of a complete Fall Protection system is limited by its lowest rated maximum capacity component. For example, if your connecting subsystem has a capacity that is less than your harness, you must comply with the capacity requirements of your connecting subsystem. See the manufacturer instructions for each component of your system for capacity requirements.
- 2.3 **CONNECTING SUBSYSTEMS:** Connecting subsystems (Self-Retracting Devices, energy-absorbing lanyards, lifeline subsystems, etc.) must be suitable for your application. Refer to the subsystem manufacturer instructions for additional information.
- 2.4 **ENVIRONMENTAL HAZARDS:** Use of this equipment in areas with environmental hazards may require additional precautions to prevent injury to the user or damage to the equipment. Hazards may include, but are not limited to: high heat, chemicals, corrosive environments, high voltage power lines, explosive or toxic gases, moving machinery, sharp edges, or overhead materials that may fall and contact the user or equipment. Contact 3M Technical Services for further clarification.
- 2.5 **COMPONENT COMPATIBILITY:** 3M equipment is designed for use with 3M equipment. Use with non-3M equipment must be approved by a Competent Person. Substitutions made with non-approved equipment may jeopardize equipment compatibility and may affect the safety and reliability of your Fall Protection system. Read and follow all instructions and warnings for all equipment prior to use.
- 2.6 **CONNECTOR COMPATIBILITY:** Connectors are compatible with connecting elements when the size and shape of either component does not cause the connector to inadvertently open, regardless of orientation. Connectors must comply with applicable standards. Connectors must be fully closed and locked during use.

3M Connectors (snap hooks and carabiners) are designed to be used only as specified in each instruction manual. Ensure connectors are compatible with the system components to which they are connected. Do not use equipment that is non-compatible. Use of non-compatible components may cause the connector to unintentionally disengage (see Figure 3). If the connecting element to which a connector attaches is undersized or irregular in shape, a situation could occur where the connecting element applies a force to the gate of the connector (A). This force could then cause the gate to open (B), disengaging the connector from the connecting element (C).

2.7 MAKING CONNECTIONS: All connections must be compatible in size, shape, and strength. See Figure 4 for examples of inappropriate connections. Do not attach snap hooks and carabiners:

- A. To a D-Ring to which another connector is attached.
- B. In a manner that would result in a load on the gate. Large-throat snap hooks should not be connected to D-Rings or other connecting elements, unless the snap hook has a gate strength of 16 kN (3,600 lbf) or greater.
- C. In a false engagement, where size or shape of the connector or connecting element is not compatible and, without visual confirmation, would seem to be fully engaged.
- D. To each other.
- E. Directly to webbing or rope lanyard or tie-back material, unless the instruction manuals for both the lanyard and connector specifically allow such a connection.
- F. To any object whose size or shape does not allow the connector to fully close and lock, or that could cause connector roll-out.
- G. In a manner that does not allow the connector to align properly while under load.



3.0 INSTALLATION

- 3.1 OVERVIEW:** Anchorage connectors must be secured to an anchorage structure before they can be used. After this is done, users may secure to the product through its anchorage connection points.
- 3.2 PLANNING:** Plan your Fall Protection system before starting your work. Account for all factors that may affect your safety before, during, and after a fall. Consider all requirements and limitations specified in these instructions.
- A. SHARP EDGES:** Avoid working where system components may be in contact with, or scrape against, unprotected sharp edges and abrasive surfaces. All sharp edges and abrasive surfaces should be covered with protective material.
- B. SYSTEM DEFLECTION:** Some anchorage connectors will deflect during fall arrest, which may increase the user's fall distance. Maximum deflection for the product is given in Table 1. When greater than zero, maximum deflection must be added to the user's required fall clearance to ensure the user does not strike an obstruction in the event of a fall.

For additional fall clearance requirements, see the manufacturer instructions for your connecting subsystem.

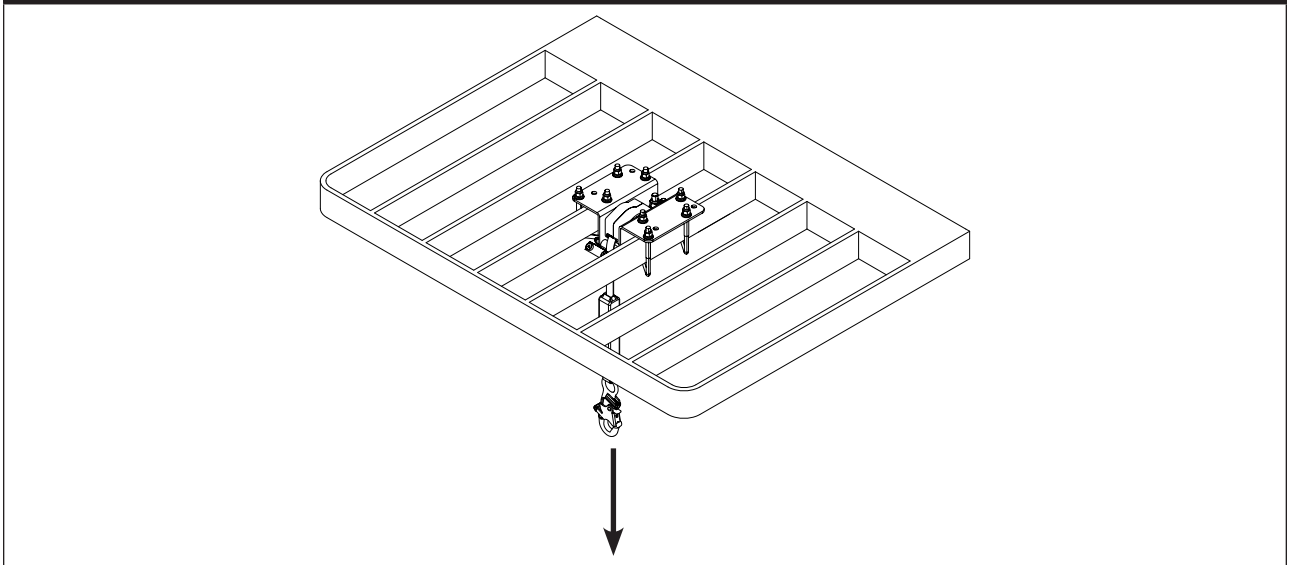
- 3.3 BEFORE INSTALLING:** The anchorage connector may be installed on structures meeting the requirements specified in these instructions. In addition to the requirements listed in Table 1, the installation must meet the following requirements:

- A. SURFACE CONTAMINATION:** Remove all surface contaminants from the anchorage connector and install location. Surface contaminants could accelerate wear on the product.
- B. COMPATIBILITY:** When installing your system, it is important that you use compatible components. Each product model is compatible for use with a specific set of product models or designs.

Self-Retracting Devices (SRDs)	The maximum arresting force for connecting personal fall arrest systems is 1800 lbf (8 kN).
---------------------------------------	---

- C. ANCHOR ORIENTATION:** The anchorage connector may be mounted as shown. See figure 5 for reference. The anchorage connector may be loaded only in the directions specified for each orientation. The user's Fall Protection system should be installed to prevent unintentional loading in unapproved directions. See Section 4 for more information on anchorage requirements.

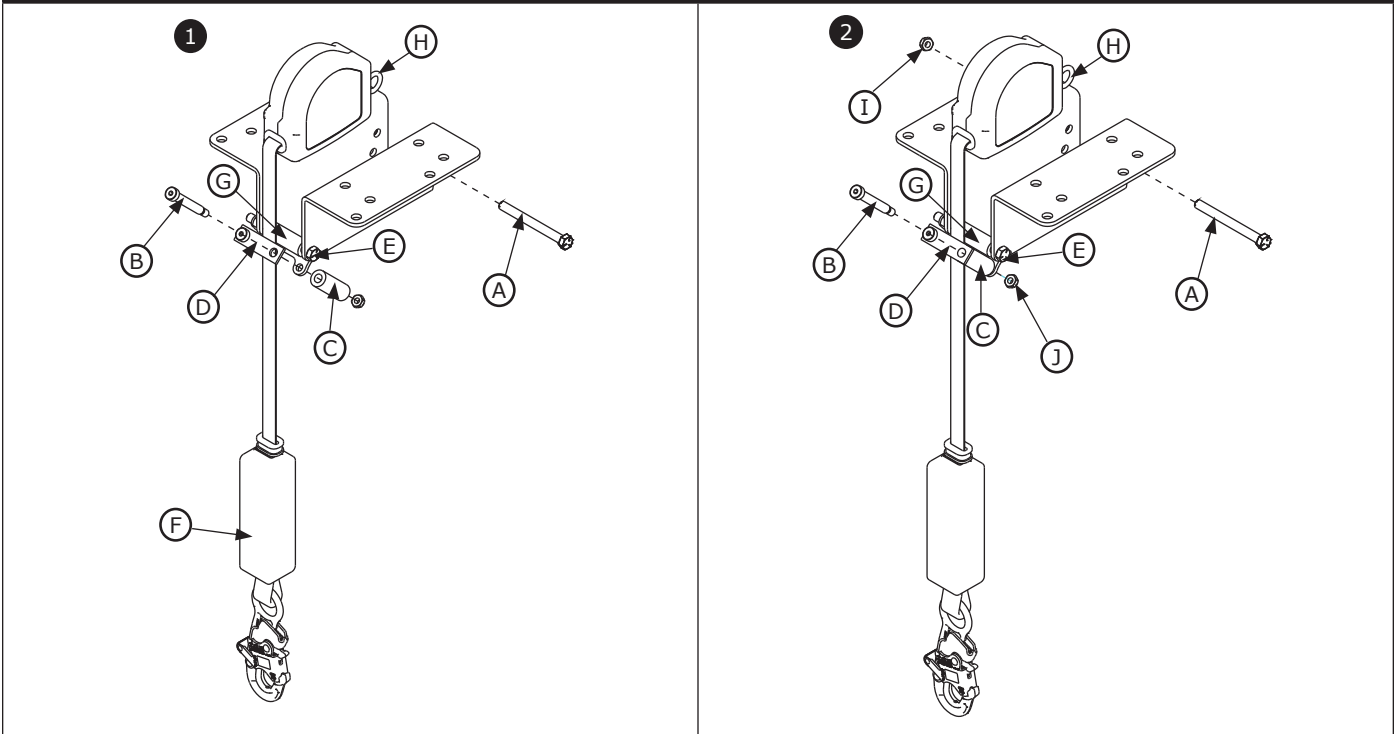
Figure 5 - Anchor Orientation



- 3.4 INSTALLING THE SELF-RETRACTING DEVICE:** The Self-Retracting Device (SRD) used with the cab top mounting bracket must be installed inside the bracket before mounting. See figure 6 for reference. To secure the SRD in the mounting bracket:

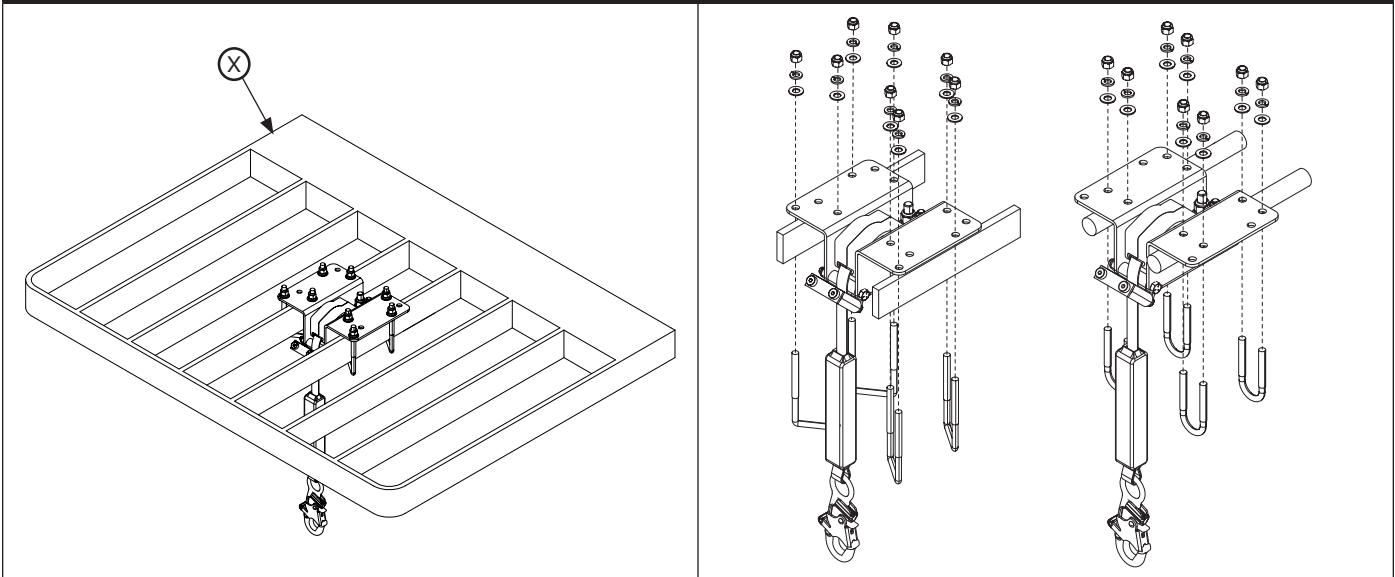
1. Remove the Mounting Bolt (A), one Side Roller Screw (B), and associated Side Roller (C). Pull a short distance of Web Lifeline (F) out of the SRD and slide the lifeline into the opening between the Roller Bracket (D) and Mounting Bracket Flange (E) so that the webbing above the SRD's impact indicator rides flat over the Bottom Roller (G) and centers between the two side rollers. Position the body of the SRD in the cradle of the mounting bracket with the Swivel Eye (H) aligned between the mounting holes in the side of the bracket
2. Thread the Mounting Bolt (A) through the mounting holes and SRD Swivel Eye (H) and secure with one of the included Nuts (I). Align the previously removed Side Roller (C) between the holes in the Roller Bracket (D) and Mounting Bracket Flange (E). Thread the previously removed Side Roller Screw (B) through the Roller Bracket (D), Side Roller (C), and Mounting Bracket Flange (E), and secure with the final provided Nut (J).
3. Tighten all bolts, screws, and nuts until snug.

Figure 6 - Installing the Self-Retracting Device



3.5 MOUNTING THE CAB TOP MOUNTING BRACKET: Mount the bracket (with the attached SRD) on the Cab Roof Cross Members (X). See figure 7 for reference. Locate the bracket as directly above the work area as possible to minimize potential swing fall. Secure the cab top mounting bracket to the cross members at each corner of the bracket with a U-bolt, flat washers, lock washers, and nuts. Use the U-bolts that best fit the cross member shape and size

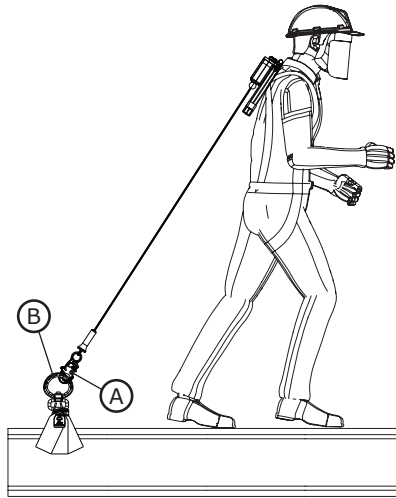
Figure 7 - Mounting the Cab Top Mounting Bracket



4.0 USE

- 4.1 BEFORE EACH USE:** Verify that your work area and Fall Protection system meet all criteria defined in these instructions. Verify that a formal Rescue Plan is in place. Inspect the product per the 'User' inspection points defined in the "Inspection and Maintenance Log". If inspection reveals an unsafe or defective condition, or if there is any doubt about its condition for safe use, remove the product from service immediately. Clearly tag the product "DO NOT USE". See Section 5 for more information.
- 4.2 AFTER A FALL:** If this equipment is subjected to fall arrest or impact force, remove it from service immediately. Clearly tag it "DO NOT USE". See Section 5 for more information.
- 4.3 SYSTEM CONNECTIONS:** Anchorage connectors are part of a complete Fall Protection system. After the anchorage connector has been secured, the user may connect to one of its anchorage connection points using their connecting subsystem. The user should attach their Connector (A) directly to the Anchorage Connection Point (B). See Figure 8 for reference. For more information, see the manufacturer instructions for your connecting subsystem.

Figure 8 - System Connections



5.0 INSPECTION

After equipment has been removed from service, it may not be returned to service until a Competent Person confirms in writing that it is acceptable to do so.

- 5.1 INSPECTION FREQUENCY:** The product shall be inspected before each use by a user and, additionally, by a Competent Person other than the user at intervals of no longer than one year. A higher frequency of equipment use and harsher conditions may require increasing the frequency of Competent Person inspections. The frequency of these inspections should be determined by the Competent Person per the specific conditions of the worksite.
- 5.2 INSPECTION PROCEDURES:** Inspect this product per the procedures listed in the "Inspection and Maintenance Log". Documentation of each inspection should be maintained by the owner of this equipment. An inspection and maintenance log should be placed near the product or be otherwise easily accessible to users. It is recommended that the product is marked with the date of next or last inspection.
- 5.3 DEFECTS:** If the product cannot be returned to service because of an existing defect or unsafe condition, then the product must be either destroyed or sent to 3M or a 3M-authorized service center for repair.
- 5.4 PRODUCT LIFE:** The functional life of the product is determined by work conditions and maintenance. As long as the product passes inspection criteria, it may remain in service.

6.0 MAINTENANCE, STORAGE, AND REPAIR

Equipment that is in need of maintenance or scheduled for maintenance should be tagged "DO NOT USE". These equipment tags should not be removed until maintenance is performed.

- 6.1 CLEANING:** Periodically clean the metal components of the product using warm water and a mild soap solution. Rinse the product with clean water, then allow it to air dry. For more information, please refer to the technical bulletin on our website: <https://www.3M.com/FallProtection/Mechanical-Device-Cleaning>
- 6.2 REPAIR:** Only 3M or parties authorized in writing by 3M may make repairs to this equipment.
- 6.3 STORAGE AND TRANSPORT:** Store and transport the product in a cool, dry, clean environment out of direct sunlight. Avoid areas where chemical vapors may exist. Thoroughly inspect components after extended storage.

7.0 LABELS and MARKINGS

7.1 **LABELS:** Figure 11 illustrates labels present on the product. Labels must be replaced if they are not present or are not fully legible. Information provided on each label is as follows:

Label images are intended to be representative. Please refer to your product label for specific information.

A 1) Product Information Label

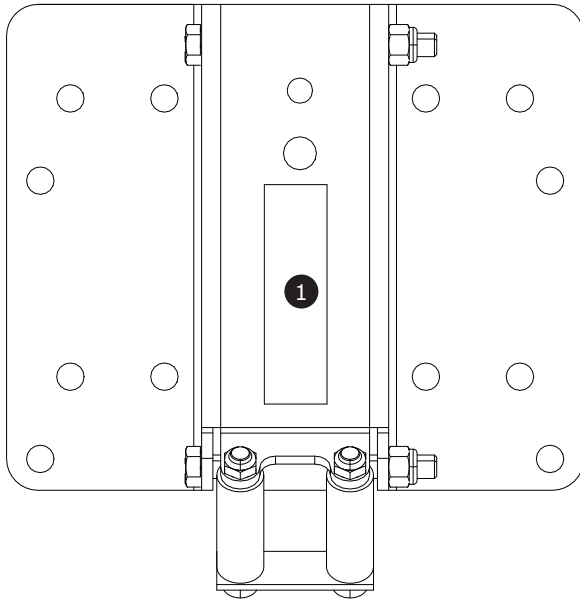
8.0 GLOSSARY OF TERMS

8.1 **DEFINITIONS:** The following terms and definitions are used in these instructions.

For a comprehensive list of terms and definitions, please visit our website: www.3m.com/FallProtection/ifu-glossary

- **AUTHORIZED PERSON:** A person assigned by the employer to perform duties at a location where the person will be exposed to a fall hazard.
- **COMPETENT PERSON:** One who is capable of identifying existing and predictable hazards in the surroundings or working conditions which are unsanitary, hazardous, or dangerous to employees, and who has authorization to take prompt corrective measures to eliminate them.
- **FALL ARREST SYSTEM:** A collection of Fall Protection equipment configured to protect the user in the event of a fall.
- **QUALIFIED PERSON:** A person with a recognized degree, certificate, or professional standing, or who by extensive knowledge, training, and experience has successfully demonstrated their ability to solve or resolve problems relating to Fall Protection and Rescue systems to the extent required by applicable national, regional, and local regulations.
- **RESCUE SYSTEM:** A collection of Fall Protection equipment configured to remove a person from hazards to a safe location. No free fall is permitted.
- **RESCUER:** A person using the Rescue system to perform an assisted rescue.
- **RESTRAINT SYSTEM:** A collection of Fall Protection equipment configured to prevent the user from reaching a fall hazard. No free fall is permitted.
- **USER:** A person who performs activities while protected by a Fall Protection system.
- **WORK POSITIONING SYSTEM:** A collection of Fall Protection equipment configured to support a user at a work position.

Figure 9 - Product Labels



1

		5,000 lbs. (22.2kN) MBS	95520 18/2 Rev. A
ANSI Z359.18-2017 TYPE A	3M.com/FallProtection	ANSI Minimum service temp. is -30°F (-34°C)	
MFRD. (YR, MO) / FABR. (AN, MO):	LOT #:	MODEL NO / N° DE MODELE:	

Table 2 – Inspection and Maintenance Log

Model Number (Serial Number):					
Date Purchased:			Date of First Use:		
...					
<input checked="" type="checkbox"/> <i>This product must be inspected by the user before each use. Additionally, a Competent Person other than the user must inspect this equipment at least once each year.</i>					
...					
Component	Inspection Procedure			Inspection Result	
				Pass	Fail
Product (Figure 2)	Inspect for cracks, dents, and deformities.			<input type="checkbox"/>	<input type="checkbox"/>
	Ensure the rollers move freely.			<input type="checkbox"/>	<input type="checkbox"/>
	Inspect for loose bolts and bent, damaged, or missing parts.			<input type="checkbox"/>	<input type="checkbox"/>
	Look for signs of corrosion on the entire unit.			<input type="checkbox"/>	<input type="checkbox"/>
Anchorage Structure	Verify that the anchorage structure meets the requirements of this instruction. Verify that the install location has no signs of damage.			<input type="checkbox"/>	<input type="checkbox"/>
Labels (Figure 9)	All labels are present and fully legible.			<input type="checkbox"/>	<input type="checkbox"/>
Fall Protection Equipment	Additional Fall Protection equipment that is used with the product is installed and inspected per the manufacturer instructions.			<input type="checkbox"/>	<input type="checkbox"/>
...					
<input checked="" type="checkbox"/> <i>If the product fails an inspection procedure, then the product fails overall inspection. If the product fails inspection, remove it from service immediately. Clearly tag the product "DO NOT USE". See Section 5 for more information.</i>					
...					
Inspection Type:	<input type="checkbox"/> User	<input type="checkbox"/> Competent Person	Overall Inspection Result:	<input type="checkbox"/> Pass	<input type="checkbox"/> Fail
Inspected By:			Date of Inspection:		
Signature:			Next Inspection Due:		
...					
Additional Notes:					

GLOBAL PRODUCT WARRANTY, LIMITED REMEDY AND LIMITATION OF LIABILITY

WARRANTY: THE FOLLOWING IS MADE IN LIEU OF ALL WARRANTIES OR CONDITIONS, EXPRESS OR IMPLIED, INCLUDING THE IMPLIED WARRANTIES OR CONDITIONS OF MERCHANTABILITY OR FITNESS FOR A PARTICULAR PURPOSE.

Unless otherwise provided by local laws, 3M fall protection products are warranted against factory defects in workmanship and materials for a period of one year from the date of installation or first use by the original owner.

LIMITED REMEDY: Upon written notice to 3M, 3M will repair or replace any product determined by 3M to have a factory defect in workmanship or materials. 3M reserves the right to require product be returned to its facility for evaluation of warranty claims. This warranty does not cover product damage due to wear, abuse, misuse, damage in transit, failure to maintain the product or other damage beyond 3M's control. 3M will be the sole judge of product condition and warranty options.

This warranty applies only to the original purchaser and is the only warranty applicable to 3M's fall protection products. Please contact 3M's customer service department in your region for assistance.

LIMITATION OF LIABILITY: TO THE EXTENT PERMITTED BY LOCAL LAWS, 3M IS NOT LIABLE FOR ANY INDIRECT, INCIDENTAL, SPECIAL OR CONSEQUENTIAL DAMAGES INCLUDING, BUT NOT LIMITED TO LOSS OF PROFITS, IN ANY WAY RELATED TO THE PRODUCTS REGARDLESS OF THE LEGAL THEORY ASSERTED.

3M



Fall Protection

USA

3833 SALA Way
Red Wing, MN 55066-5005
Toll Free: 800.328.6146
Phone: 651.388.8282
Fax: 651.388.5065
3Mfallprotection@mmm.com

Canada

600 Edwards Blvd, Unit #2
Mississauga, ON L5T 2V7
Phone: 905.795.9333
Toll-Free: 800.387.7484
Fax: 888.387.7484
3Mfallprotection-ca@mmm.com

Brazil

Rodovia Anhanguera, km 110
Sumaré - SP
CEP: 13181-900
Brasil
Phone: 0800-013-2333
falecoma3m@mmm.com

Mexico

Av. Santa Fe No. 190
Col. Santa Fe, Ciudad de Mexico
CP 01219, Mexico
Phone: 01 800 120 3636
3msaludocupacional@mmm.com

EMEA (Europe, Middle East, Africa)

EMEA Headquarters:
Le Broc Center
Z.I. 1re Avenue - BP15
06511 Carros Le Broc Cedex
France
Phone: + 33 04 97 10 00 10
Fax: + 33 04 93 08 79 70
informationfallprotection@mmm.com

United Kingdom

3M Centre
Cain Road
Bracknell, RG12 8HT
Phone: 0870 60800 60
www.3M.co.uk/construction

Slovakia

Capital Safety Group - Banská
Bystrica, s.r.o.
Jegorovova 35
974 01 Banská Bystrica
Slovak Republic
Phone: + 421 (0)47 00 330
Fax: + 421 (0)47 00 336
informationfallprotection@mmm.com

Australia & New Zealand

137 McCredie Road
Guildford
Sydney, NSW, 2161
Australia
Toll-Free : 1800 245 002 (AUS)
Toll-Free : 0800 212 505 (NZ)
3msafetyauucs@mmm.com

Asia

Singapore:
1 Yishun Avenue 7
Singapore 768923
Phone: +65-6450 8888
Fax: +65-6552 2113
TotalFallProtection@mmm.com

China:

38/F, Maxdo Center, 8 Xing Yi Rd
Shanghai 200336, P R China
Phone: +86 21 62753535
Fax: +86 21 52906521
3MFallProtection-CN@mmm.com

Korea:

3M Korea Ltd
18F, 82 Uisadang-daero,
Yeongdeungpo-gu, Seoul
Phone: +82-80-033-4114
Fax: +82-2-3771-4977
3msupport.kr@mmm.com

Japan:

3M Japan Ltd
6-7-29, Kitashinagawa, Shinagawa-ku,
Tokyo
Phone: +81-570-011-321
Fax: +81-3-6409-5818
psd.jp@mmm.com

WEBSITE:
3M.com/FallProtection



DECLARATION OF CONFORMITY:
3M.com/FallProtection/DOC

(European Union and United Kingdom)